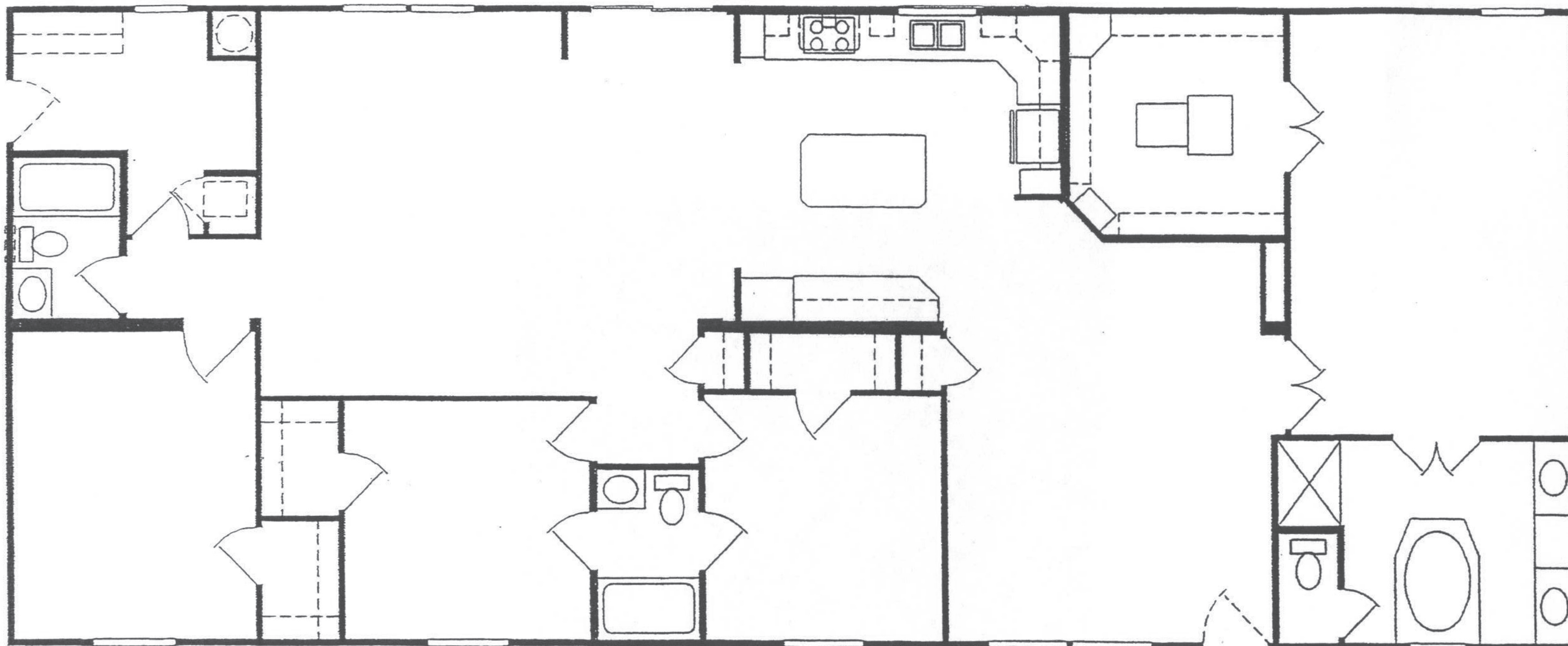




SAVE ENERGY \$\$...EVERY DAY

WITH A NORTHERN-BUILT IRC MODULAR HOME by SKYLINE

SKYLINE C281MA • 4 BEDROOMS • 3 BATHROOMS



- Built to International Residential Code (IRC)
- Approved for placement in the City of Tulsa
- 9' Flat interior ceilings
- Northern Built - R38 Roof R19 Walls R22 Floor

STANDARD FEATURES INCLUDE:

40# Roof Construction
 OSB Exterior Wall Sheathing
 2x6 Sidewalls 16" on Center
 2x10 Floor Joist
 6-Panel Steel Front Door w/ Storm
 25 Year Shingles
 Dual Glazed Vinyl Windows w/ Low E Glass
 Overhead Cabinets at Washer/Dryer Area

Drawer over Door Kitchen Cabinet Construction
 Lined Overhead Cabinets w/ Adjustable Shelves
 Oak Cabinet Doors & Face Frames
 Self-Edge Counter Top w/ Backsplash
 Water Shut-Off Valves at all Fixtures
 China Sink w/ Overflow & Pop-up Drain
 One Piece Fiberglass 60" Tub in Hall Bath
 Drop-In Tub w/ 48" Separate Shower in Master Bath
 Elongated China Commodes

Delta Faucets Throughout
 Perimeter Heating w/ Baseboard Registers
 Toe-Kick Registers in Kitchen & Baths
 Exterior Receptacle w/ GFI Breaker
 Dining Chandelier
 Copper Wiring
 ...and more!

15-MONTH FULL WARRANTY BY SKYLINE
10-YEAR LIMITED WARRANTY BY INSURER

OPTIONS INCLUDED IN DISPLAY HOME

PRICE

SKYLINE LEXINGTON C281MA	
HOME-MART DISCOUNTED BASE PRICE	\$99,128
Cemplank Lap Siding	3,154
Exterior Columns & Cempanel	594
Steel Door Etched Oval Glass	492
Atrium Door (IPO Sliding Glass Door)	870
6-Panel Interior Passage Door	912
Picture Window w/ End Sliders (IPO 2 vinyl windows)	240
Window-Hylite Block 8x32	228
Window Blinds 2"	420
Transom Windows	1,320
Oak Window Sills throughout	468
Hardwood Molding	2,040
Ceramic Tile Backsplash (1 Row (Kitchen))	72
Ceramic Tile Backsplash (1 Row (Bath))	162
Decorative Ceramic Tile Insert	42
Gem Lock Countertops	912
Soffit w/ 4 Can Lights	180
Bookcases	360
Cabinets-18" Lazy Susan in Overhead Cabinet in Kitchen	48
Cabinets-Raised Panel Oak	594
Cabinets-Overhead over Refrigerator	60
Cabinets in Utility	390
Linen Cabinet over Stool	270
Wooden Closet Rods	180
Tape & Texture including Closets	6,556
Bullnose Corners	180
Accent Color T&T walls	240

OPTIONS INCLUDED IN DISPLAY HOME

PRICE

Ceramic Entry Tile	156
Anchorage Carpet	1,094
Rebond Carpet Pad	672
Ceramic Tile in Kitchen & 2 Baths	3,958
Light-Pendant	96
200 AMP Service	72
Receptacle-Weatherproof Exterior (each)	36
Wire & Brace for Ceiling Fan w/ Dual Switch (3)	180
52" Paddle Fan w/ Light Kit and Wire & Brace (3)	468
6" Recess Spot Can Light	504
AC Prewire 40AMP	102
Fluorescent Light	178
Fluorescent Light-under Cabinet (4)	296
Water Shut-Off Valve--Whole House w/ Cab Door	60
Whirlpool Drop In Fiberglass Tub	750
Freeze-Proof Exterior Faucet (2)	84
50 gallon Electric Water Heater	84
Laundry Sink	234
5/12 Pitch Roof w/ Architectural Shingles	7,194
9' Sidewalls	1,842
Recessed Entry	240
Mountain Ledge Fireplace w/ Stone Mantel High (Wood-burning)	1,404
Gourmet Kitchen	6,354

Model Home Price Including Options as Displayed \$145,809

LESS SPECIAL HOME-MART DISCOUNT - \$10,326

***THE ONLY FACTORY-BUILT HOME IN AMERICA THAT IS BACKED BY A FULL WARRANTY! (NOT PARTIAL • NOT LIMITED)**

Omitting options you consider unnecessary can substantially lower price and payments. Unless specified, price does not include furniture, decor items, ceiling fans, wheels or axles. Because of progressive product improvement all prices & specifications are subject to change without prior notice or obligation to Home-Mart, Inc. Price of home assumes installation on property provided by purchaser.

FAIR SPECIAL PRICE

\$135,915